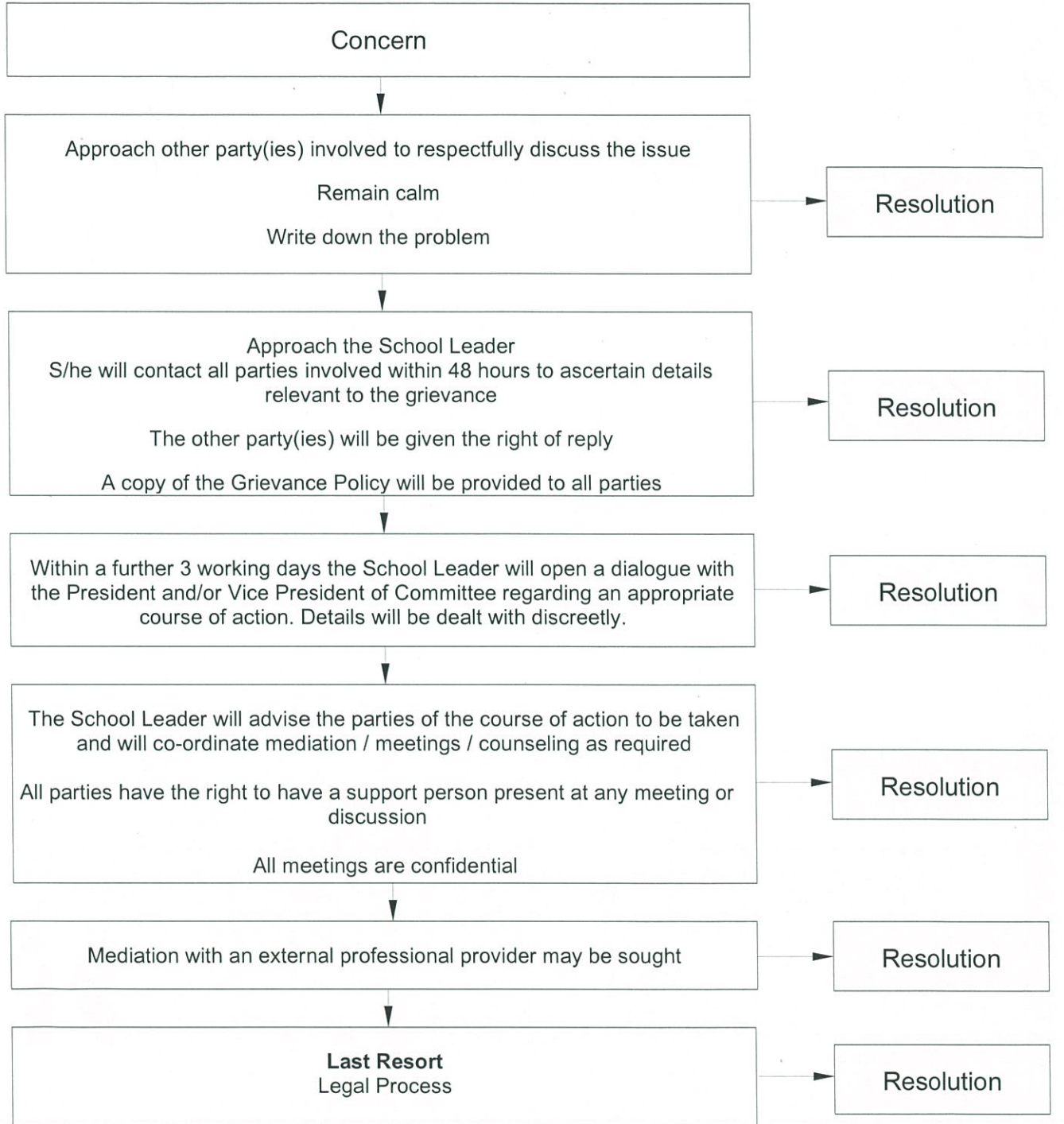




The Cottage School Inc.

GRIEVANCE RESOLUTION FLOW CHART

Approved by Committee December 2019



Only the parties involved, the School Leader, the Committee Vice-President and/or the Committee President have access to the details of the grievance

A grievance may be withdrawn at any time throughout the process

All parties will be informed in writing of the outcome of any grievance lodged